



# Impact Report 2021



## Our Mission

Build hope and healthy families through a helping hand program of structured housing. Allow families with children to remain together in a safe and decent living environment so that they may grow stronger and self-reliant, transform their lives, and *crush the cycle of homelessness and poverty.*



# From the Director's Desk

Like everyone, we faced economic and healthcare struggles in the past two years; however, we are on stronger footing today than ever before with more revenue sources, more fiscal security, more staff, more programs, and a much greater impact. In 2021, we grew in almost every way; the most significant way is in our capacity to improve the lives of homeless children and their families here in Brevard County.

Community of Hope has increased our impact every year with an almost 300% growth in the families we served in just the last four years. In fact, in 2021 we increased families served by 81% over 2020, providing housing and shelter services to 826 of our most needy Brevard neighbors. This does not even include the indirect impact we have by partnering with other agencies and helping to direct the coordinated efforts of our homeless services community.

I consider expanding our services one of the key factors for Community of Hope's success. We have willingly thought "outside the box" to help Brevard County fix sheltering shortfalls, and we continue an open dialogue with every agency, group and individual who can make our vision of "Transforming lives with hope and dignity" become a reality. Starting in 2022, we will use our programs as stepping stones to solidify and diversify funding sources and increase our capacity to help more households struggling with homelessness and poverty in Brevard County. We will center our increased capacity on the goals delineated in our strategic plan which can be found on our website ([www.hopeofbrevard.com](http://www.hopeofbrevard.com)).

What Community of Hope does, we do for those we serve: the economically disadvantaged families; the lost young adults with inadequate or non-existent family supports, those who fell on hardship due to personal choices they yearn to take back; and most of all for the children who, if we reach them today, may avoid the trauma that makes them vulnerable to abuse, neglect, poor academic progress, human trafficking and perpetuating the cycle of poverty and homelessness their parents face. Therefore, our Impact Report provides the statistics and outcomes that demonstrate our effectiveness but leans heavily on the words and stories of our constituents that all too often go unheard.

Thank you for being part of our community. We are a Community of HOPE. We look forward to you being part of the Community of Hope Family in 2022 and beyond!





# Snapshots of Success



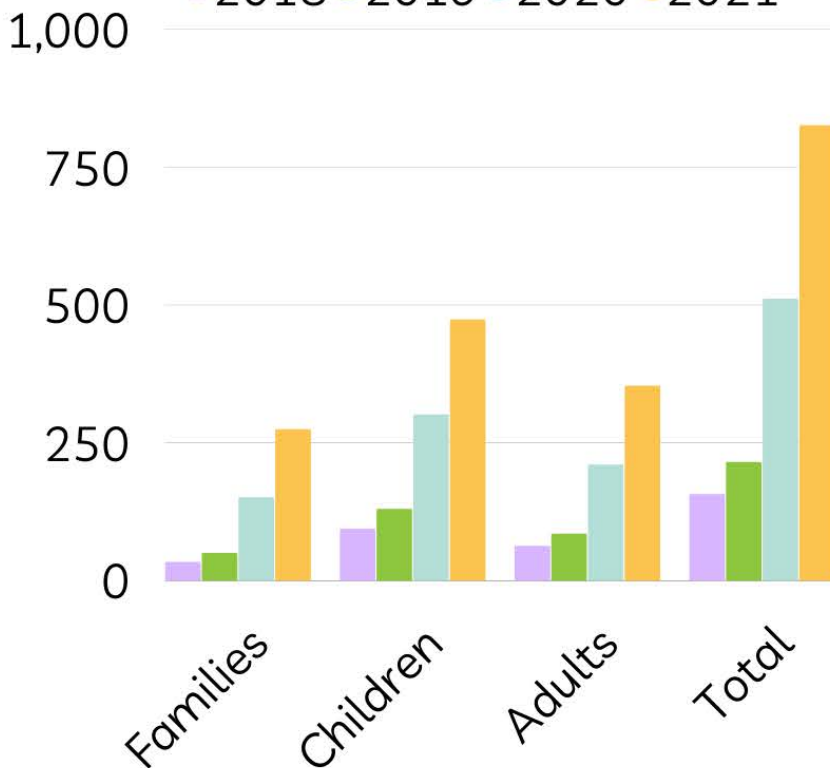
42% of homeless kids transfer school at least once.  
Each transfer equals 6 months of lost learning.

## WHAT HAS COMMUNITY OF HOPE'S IMPACT BEEN? 2018-2021



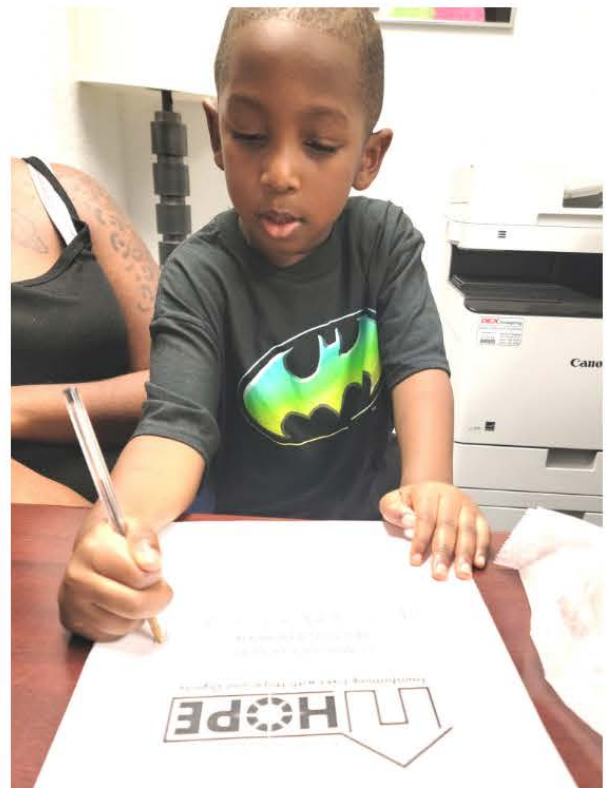
### NUMBER SERVED IN ALL COH PROGRAMS

2018 2019 2020 2021



"I AM NOT SURE WHERE WE WOULD BE WITHOUT THE LOVE AND KINDNESS THAT COH WRAPPED AROUND US."

-SINGLE MOM OF TWO





# Internal Housing Programs

STABILIZING FAMILIES BY PROVIDING  
HOUSING AND HANDS-ON CASE MANAGEMENT

IN 2021 WE HOUSED...

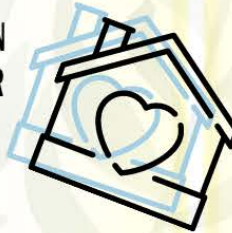
**87  
KIDS**

BENEFIT FROM A  
STABLE PLACE TO CALL  
HOME.



**58  
ADULTS**

WHO WERE ABLE TO PROVIDE  
THEIR FAMILIES A HOUSE  
TODAY, WHILE WORKING ON  
PROVIDING THEM A BETTER  
TOMORROW.



**40  
FAMILIES**

WHO GOT TO GROW TOGETHER,  
LOVE ONE ANOTHER, AND BUILD  
A BRIGHTER FUTURE.



**3 FAMILIES**  
LEFT COMMUNITY OF HOPE  
HOUSING TO BECOME  
HOMEOWNERS. A TREND WE  
ARE FOSTERING AND MAKING  
PLANS TO INCREASE!

.....  
"THE RESPONSE OF THE COH TEAM WAS  
UNMEASURABLE."

-SINGLE DAD OF TWO  
.....



## TRANSITIONAL HOUSING PROGRAM

A two year program that focuses on paving a path toward long-term housing goals, the THP provides an income based rental unit along with access to resources such as Financial Peace University and Hope Connections (our mentor/partner initiative) to provide residents with the tools to forge their own future.

.....  
"WHEN NO ONE ELSE WOULD RETURN  
MY CALL, COMMUNITY OF HOPE WAS  
THE ONE THAT DID AND CHANGED ME  
AND MY CHILDREN'S LIVES."

-SINGLE MOM OF 5  
.....







## PERMANENT SUPPORTIVE HOUSING

A longer term affordable housing program, our PSH provides to families on a fixed income or who are not otherwise stable enough to meet the two year frame of our transitional program.

### The American Dream...

Most of our residents ascribe to the "white picket fences" home ownership dream...

& many achieve it!

in 2021

7.5%

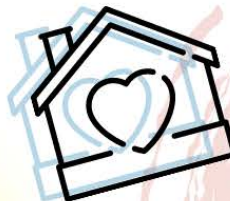
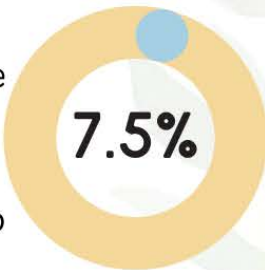
of our families own a home.

**WE SUPPORT THIS DREAM & LOOK FORWARD TO HELPING MORE OF OUR FAMILIES ACHIEVE IT IN 2022 & BEYOND.**

.....  
"THE TIME AND EFFORT THAT COMMUNITY OF HOPE PUT INTO HELPING US GET BACK ONTO OUR FEET MEANT THE WORLD TO US. WE ARE NOW HOUSED AND BACK ON OUR FEET AND COULDN'T BE HAPPIER. WE COULDN'T HAVE DONE IT WITHOUT THEIR LOVE AND GUIDANCE."

-DAD AND MOM OF 3 LITTLES

.....



## HOLISTIC SUPPORT TO HELP FAMILIES CONNECT AND GROW

EVERYONE DESERVES A SAFE SPACE,  
HOMELESSNESS DOES NOT DISCRIMINATE

By necessity, many resources designed to assist the homeless are divided (women only shelters, men only shelters, shelters for youth etc). However, this will often create barriers to access for parents with children around the age of 12. At that point, most shelters will require that the family split between males and females for the safety of the children. Community of Hope provides an extremely important opportunity: for families to stay together. This helps to reduce trauma to the entire family system- especially the kids.

"Connection is one of the most important things that we can provide for a family facing homelessness; not only to resources but also to the rest of the community for acceptance and support. Every person, every child, should know they are valued and worthy."

We have designed our housing programs to provide as many points of support and access to the community as possible. This informs everything from our case management to the layouts for both our current Permanent Supportive Housing Village and our building project in Titusville- HOPE Hammock, with multiple units around common play and interaction areas.

**YOU CAN HELP A FAMILY IN NEED!**  
GO TO OUR WEBSITE AT [HOPEOFBREVARD.COM](http://HOPEOFBREVARD.COM) TO FIND WAYS THAT YOU CAN HELP A FAMILY WHEN THEY NEED IT MOST.  
WE NEED YOU, AND SO DO THEY.

**MAKE A DONATION TODAY**



*We envision a world where every single family no matter its structure or size has a safe place to call home and we're starting here in Brevard County. It is through the support of the entire community- partner organizations, local landlords, houses of worship, and the community at large- that we are able to fulfill this mission.*



.....  
"COMMUNITY OF HOPE WOULD BE WORKING ON MY SITUATION ALL HOURS OF THE DAY AND ON WEEKENDS. SHE WOULDN'T LET ME GIVE UP. I'M GLAD THEY NEVER GAVE UP ON US."  
-GRATEFUL SINGLE MOM OF 2  
.....



.....  
"COH PUT US IN A HOTEL SO WE COULD GET OUT OF OUR CAR AND GAVE US A CHANCE TO RECUPERATE AND REFOCUS. THEY GAVE US A SECOND CHANCE."  
-DAD AND MOM OF 3  
.....



"I JUST COULDN'T PULL IT TOGETHER ENOUGH TO SEE THE LIGHT AT THE END OF THE TUNNEL. I LOST ALL HOPE. I FELT LIKE I HAD DISAPPOINTED MY CHILDREN AND MYSELF. I DIDN'T KNOW WHERE TO GO. COMMUNITY OF HOPE SHOWED UP AND WORKED WITH ME EVERYDAY TO GET THINGS BACK ON TRACK. I GREW IN MY HOPE AND BEFORE I KNEW IT, MY FAMILY WAS BACK TOGETHER AND HAD A ROOF OVER OUR HEADS. COMMUNITY OF HOPE WAS THE MIRACLE THAT I NEVER SAW COMING."  
-SINGLE MOM OF 1





# Community



*We are always seeking opportunities to provide community connections for the families we are privileged to work with. It's these social support systems that help families to thrive through challenging times, and in many cases, the families we work with are leaving abusive or unhealthy environments (physically, mentally, or emotionally) to start anew with only each other to lean into.*

*Through our Hope Connections mentor program, community events such as holiday celebrations, and our online presence, we hope to always reinforce a fundamental truth:*

*they are  
not alone.*



**"COMMUNITY OF HOPE MET ME AND MY FAMILY  
RIGHT WHERE WE WERE AND GAVE US THE  
DIRECTION WE NEEDED."**

**-MOM AND DAD OF TWO TODDLERS**



**"COMMUNITY OF HOPE WORKED HARDER THAN I EVER  
THOUGHT I DESERVED."**

**-SINGLE DAD OF TEENAGE SON**

.....  
"COMMUNITY OF HOPE  
SHOWED UP  
EACH AND EVERYDAY  
WITH A SMILE AND  
WORDS OF ENCOURAGEMENT.  
IT KEPT US GOING.  
GIVING UP  
WAS NOT AN OPTION."  
-BLESSED MOM OF 4  
.....





# Shelter Programs

## THE SAFE OVERNIGHT STAY ( SOS )

is a collaborative project conceived as a proof-of-concept project by Community of Hope and the Brevard Homeless Coalition, with 2-1-1 Brevard and Family Promise of Brevard partnering to surround homeless families with the support they need to avoid the traumatic and cyclical trap of homelessness. This is how families could stay together in sudden situations where they would otherwise be separated or forced to live unsheltered.

The SOS program provides a short term intensive shelter at sites throughout Brevard County. During which the family will work very closely with our case manager, develop both short and long term goals and assess what personal and community resources they have available.

**95%** Percentage of individuals who entered the SOS Program without insurance, and left with coverage.

### Safe Overnight Stay (SOS) Program Impact



### 6.5 YEARS OLD

Average age of a child entering the SOS housing with their family



### EARLY LEARNING COALITION REFERRALS

Children who experience homelessness are exponentially more likely to be behind their housed classmates, starting as soon as they begin school. By assisting the families in receiving early learning referrals, we can help make sure toddlers are able to receive preschool services, which also assist parents in maintaining employment.

.....  
"COMMUNITY OF HOPE SAVED ME AND MY SONS LIVES. THEY WILL NEVER TRULY KNOW THE IMPACT THEY MADE BY JUST THEIR COMPASSION."  
SINGLE MOM OF 1 SON  
.....





## READY FOR HOPE

is a partnership with Ready For Life Brevard and the Housing Authority of Brevard County. While Ready for Life Brevard guides young adults out of foster care by helping them attain the skills to build the resources needed to get started on their journey in adulthood, they do not have a housing component. With combined efforts our agencies provide shelter and housing interventions to get these kids off the streets --- permanently.

### CASE MANAGEMENT

Often guardians are run so ragged from the expensive trap of homelessness and trying to provide for their families, that they don't have the time or resources to pause and look forward toward to a stable future. Our case management team is absolutely vital to our efforts as they help the families identify what their goals are and provide them the tools to create a plan for the future.



.....  
"WE BOUNCED FROM FRIEND'S COUCHES TO MORE FRIEND'S COUCHES. WE WORE OUT OUR WELCOME. COH GAVE ME AND MY FAMILY A SAFE PLACE TO STAY UNTIL WE COULD FIND PERMANENT HOUSING. THEY EVEN HELPED US MAKE EVERYTHING POSSIBLE BY ASSISTING US WITH MOVE-IN COSTS. THEN WE FOUND A PLACE AND IT FELT SO NICE TO CALL IT OUR OWN."  
-AGED OUT FOSTER CARE MOM OF 2  
.....



### SO MUCH MORE THAN SHELTER

While our primary mission will always be centered around providing every child in Brevard County with safe and secure housing, we recognize that there are many ancillary issues that the families are facing. An important part of our mission involves being able to provide accurate and supportive case management services.

.....  
"I HAVE BEEN SLEEPING ON A PARK BENCH FOR WEEKS AND I HAVE NOT HAD A SHOWER IN PROBABLY THAT LONG. I THINK I MIGHT TAKE TWO HOT SHOWERS TODAY."  
-AGED OUT OF FOSTER CARE AGE 19  
.....

### MOVE-IN ASSISTANCE

Even if a family is able to find housing that fits their needs, many times the deposit and first rent payments are more than they are able to afford. We work with local landlords as well as with other community agencies to provide move-in support to transition from our program to long-term housing solutions that will last.

.....  
"NO ONE WILL UNDERSTAND HOW IT FEELS TO HAVE TO HOLD ONTO YOUR BELONGINGS WHEN YOU ARE SLEEPING OUTSIDE SO THEY DON'T GET TAKEN. COH GAVE ME A SAFE PLACE TO SLEEP WITHOUT HAVING TO SLEEP WITH ONE EYE OPEN."  
-AGED OUT OF FOSTER CARE AGE 20  
.....



# Partners & Financial Stewardship



**Fiscal Stewardship:** In 2021, Community of Hope continued to increase and diversify revenue sources to make us more sustainable and better able to meet the needs of those we are here to serve!

Churches were key to our founding, remain key to our faith-based mission, and remain the largest source of private donations. We also have had considerable donations from individual private donors for which we feel very blessed. These donations have allowed us to expand the services we provide to our clients and directly house and shelter more people than ever before.

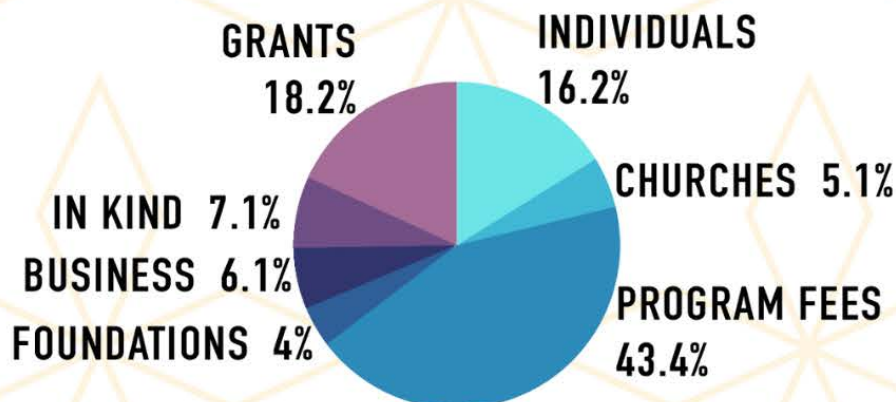
Finally, while we want to maintain our local roots, we have also incorporated some state and federal grant funds when appropriate, allowing us to serve more households and make a larger impact on the needs of our community.

In 2022 we will build on these trends and also work more with our local business community, helping to maintain attainable housing for the workforce that businesses need to succeed. Brevard County has a thriving business community which presents COH with an opportunity to increase corporate partnerships.

We continue to be trustworthy stewards of the gifts given to us, using them to serve as many in the community as possible.

The chart below shows our sources of revenue for 2021. We continue to balance revenue from philanthropic sources with our desire to give our clients a hand up.

## Income 2021



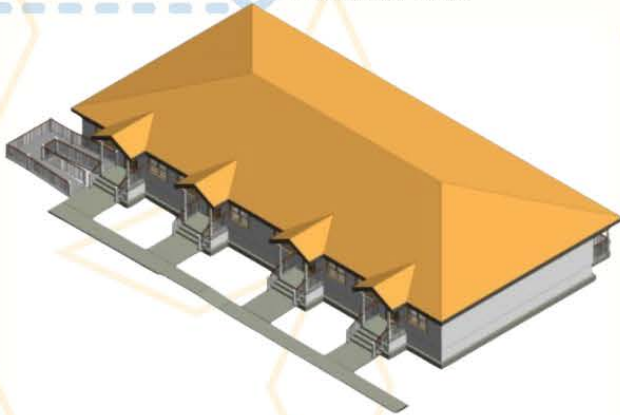


# Onward Devotion Continues to Bloom

Community of Hope is still focusing on community connections: working with local landlords, rental companies, and hospitality organizations to create meaningful relationships that allow us to offer both long and short term assistance in the form of move-in support for families that do not necessarily need the services provided by Transitional or Permanent Supportive Housing.



HOPE Hammock  
Titusville



On November 10th, Community of Hope broke ground on HOPE Hammock, a new ten-unit complex for families coming out of homelessness. HOPE Hammock is located in the heart of Titusville just blocks from City Hall and downtown Titusville. HOPE Hammock harbors Phase 1 which includes four single family-units and Phase 2 which includes an additional six housing units. This expands our longer-term housing capacity by nearly 30%.

## HELP US GROW

YOUR CONTRIBUTION DIRECTLY  
SUPPORTS HOMELESS FAMILIES  
AND CHILDREN



*Here's How:*



## PARTNER WITH US

Whether you are a landlord willing to work with our families or a business wanting to give back to the community we would love to partner with you!



## HELP US SPREAD THE WORD

Like and Follow our Facebook page and Instagram to help us to share information in the community.



## FINANCIAL DONATION

Every dollar goes to providing Brevard families and children safe shelter when they need it most.

For more info, visit us at  
**HopeofBrevard.com**  
on Facebook at  
**Facebook.com/COHBrevard**  
and on Instagram at  
**@communityofhopebrevard**



# Organizational Leadership

## BOARD OF DIRECTORS

### *Executive Director*

P. Drew Warren

### *2022 Board of Directors*

Pastor David Young  
*President*

Linda Parrish  
*1st Vice-President*

Tracy Masters  
*2nd Vice-President*

Stephanie Hopper  
*Secretary*

Bartow Willingham  
*Treasurer*

### *Directors*

Bryan Becker  
Susan Blair  
Alyssa Buchanan  
Kevin Brown  
Judy Dolan-Wood  
Kimberly Hewatt  
Megan Howard  
Brian Ledford  
Becky McCowen  
Sylvia Herdt  
Ellen Rogers  
Mable Williams



## TRUSTEE CHURCHES

Ascension Catholic  
Ascension Lutheran  
Centerpointe Churce  
Christian Fellowship  
Covenant Presbyterian  
Eastminster Presbyterian  
First United Methodist of Melbourne  
Highland Avenue Fellowship  
Holy Trinity Episcopal  
Trinity Wellsprings Church



## CONNECT WITH US!

Mailing Address: PO Box 1253  
Melbourne, Florida 32902

Telephone: 321-474-0966

Fax: 321-574-0799

Website: [HopeOfBrevard.com](http://HopeOfBrevard.com)

Facebook: [www.facebook.com/COHBrevard](http://www.facebook.com/COHBrevard)

Instagram: [@communityofhopebrevard](https://www.instagram.com/communityofhopebrevard)

