



# Impact Report 2020



## Our Mission

To build hope and healthy families through a helping hand program of structured housing. Allowing families with children to remain together in a safe and decent living environment so that they may grow strong, become self-reliant, transform their lives, and crush the cycle of homelessness and poverty.

# From the Director's Desk

I'd like to start by thanking our community for the support you provide to Community of Hope and the vulnerable children and families we serve. It's through the support of our volunteers, donors, church sponsors, and community partners that Community of Hope was able to pivot and thrive in 2020 despite all of the hardships the year presented. As you will see in this Impact Report, we have grown in almost every way...but the most important way is in our capacity to improve the lives of homeless children and their families here in Brevard County. We housed and sheltered more families in 2020 than in any prior year of our 15 year history and are now the largest provider of affordable housing to homeless families in Brevard County.

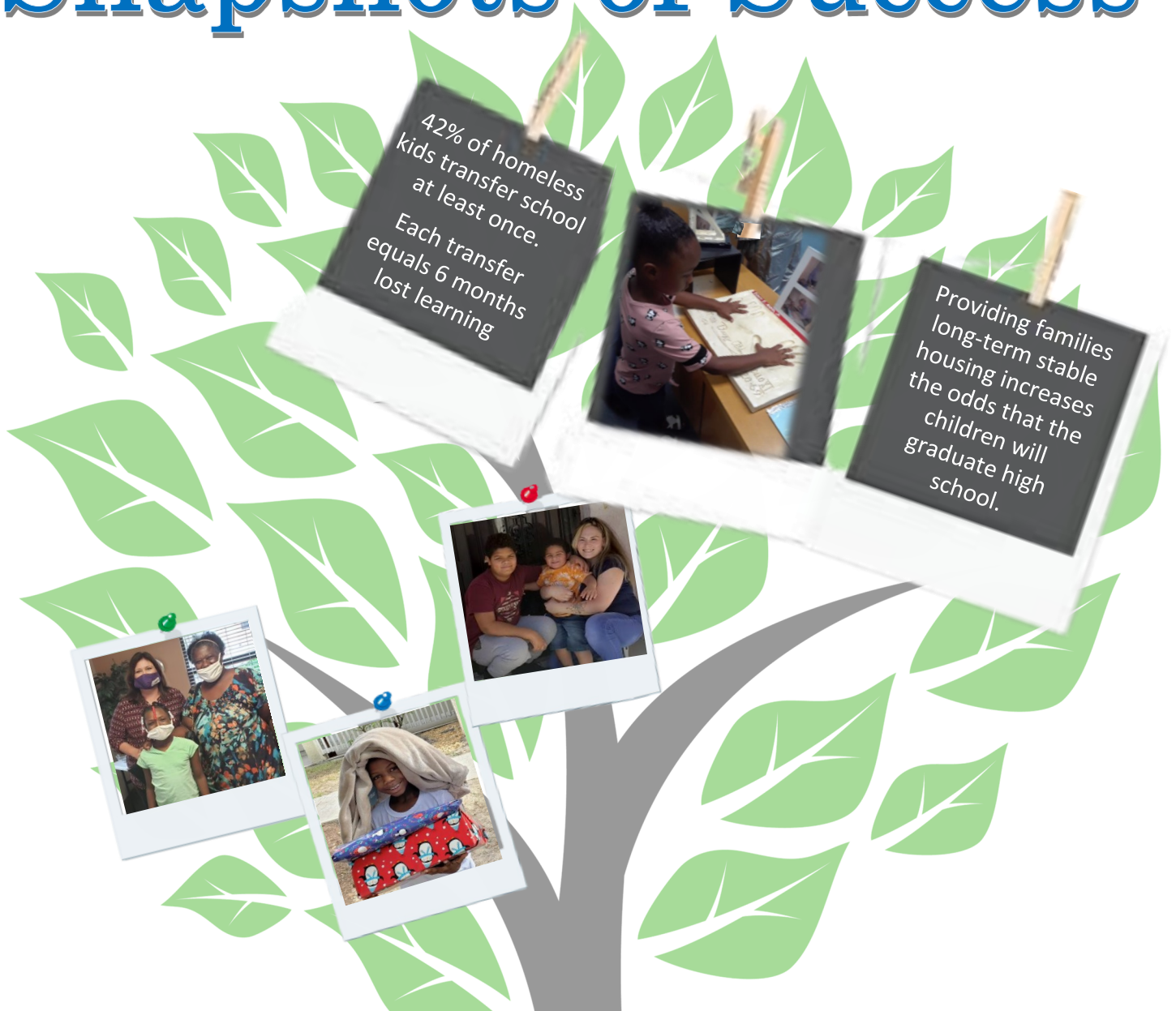


The past year has been a trying one for Community of Hope and the clients we serve. Faced with a virus that caused many homeless service agencies to shut their doors or restrict their services, Community of Hope broadened our services and reached more families than ever. Shelter services for all demographics were particularly hard hit in the county but this was especially true for family shelter services which are often reliant on congregate housing and a large volunteer base often comprised of people at high risk of infection. The Safe Overnight Stay (SOS) model that we pioneered with the Homeless Coalition was uniquely positioned to shelter families during the COVID crisis as it uses individual shelter units rather than housing family groups together. Because we could follow the best practices of sanitization and transmission prevention between families, we were able to shelter 149 households over the course of 2020. We also worked with the Brevard Homeless Coalition (BHC) to expand the program to meet the needs of more families as well as senior citizens by working with other agencies including Housing for Homeless, Family Promise, and Genesis House.

Our Transitional and Permanent Supportive Housing programs continued to grow and are on the cusp of adding 10 units in the coming months through our Titusville build, Hope Hammock. We are always looking for opportunities to expand our housing inventory so we can assist more families, but we have also found ways to work with private landlords to help families in need while we provide financial assistance and case management. Our transitional housing program housed 43 people and our Permanent Supportive Housing program housed 81 people. However, through our other housing assistance programs we were able to house 389 people.

In 2021 we will continue to increase our impact in Brevard by expanding our existing programs, working with our community partners, and finding new and innovative ways to make sure no family in Brevard is homeless. There is no reason that a county that put a man on the moon must leave a child on the street. We look forward to working with you to make this goal a reality.

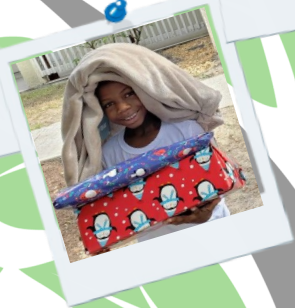
# Snapshots of Success



42% of homeless kids transfer school at least once. Each transfer equals 6 months lost learning



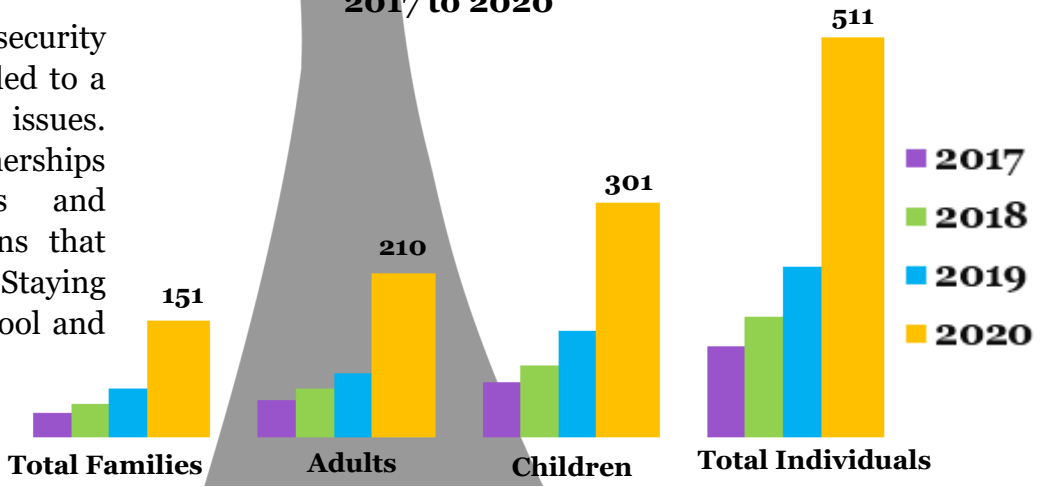
Providing families long-term stable housing increases the odds that the children will graduate high school.



## What Has Community of Hope's Impact Been?

2017 to 2020

Job loss and income insecurity as a result of Covid-19 led to a huge spike in housing issues. This made our partnerships with local landlords and community organizations that much more important. Staying housed kept kids in school and families together.





# LONG-TERM HOUSING PROGRAMS

STABILIZING FAMILIES BY PROVIDING HOUSING AND HANDS-ON CASE MANAGEMENT

## IN 2020 WE HOUSED...

DURING THE PANDEMIC, AS SCHOOLS PIVOTED TOWARDS ONLINE LEARNING, HAVING STABLE HOUSING, INTERNET, AND COMPUTER ACCESS BECAME A NECESSITY. THIS HOUSING PROGRAM ENSURED THEY HAD THE NECESSARY ACCESS TO KEEP UP WITH THEIR CLASSES.

73  
KIDS



51  
ADULTS



MANY OF OUR CLIENTS WORK TWO OR MORE JOBS IN ADDITION TO ANY ASSISTANCE THEY RECEIVE, OFTEN IN SERVICE INDUSTRIES THAT WERE HARDEST HIT BY COVID MAKING BUDGETING EXPONENTIALLY HARDER.

38  
FAMILIES

DURING COVID, MANY OF THE COMMUNITY RESOURCES THAT WOULD HAVE NORMALLY BEEN AVAILABLE TO FAMILIES HAD TO CLOSE DOWN. COMMUNITY OF HOPE HELPED TO MAINTAIN CONTINUITY OF SERVICES SO FAMILIES STAYED HOUSED THROUGHOUT THE PANDEMIC.



33  
NUMBER OF HOUSING UNITS



WE ARE ALWAYS LOOKING TO GROW: MORE HOUSES MEANS MORE FAMILIES SAFELY OFF THE STREETS, OUT OF MOTELS, AND ON THEIR WAY TOWARD LONG-TERM STABILITY AND SELF-SUFFICIENCY.

### YOU CAN HELP A FAMILY IN NEED!

GO TO OUR WEBSITE AT [HOPEOFBREVARD.COM](http://HOPEOFBREVARD.COM) TO FIND WAYS THAT YOU CAN HELP A FAMILY WHEN THEY NEED IT MOST.

## Transitional Housing Program

A two year program that focuses on paving a path toward long-term housing goals, the THP provides an income based rental unit along with access to resources such as Financial Peace University and Hope Connections (our mentor/partner initiative) to provide residents with the tools to forge their own future.



“Community of Hope didn’t just help me and my kids during this dark time; they became my family.”

-K, a single Mother of four children



## Permanent Supportive Housing

A longer term affordable housing program, our PSH provides rental units to families on a fixed income, or who are more financially stable and working on their next steps toward home ownership (saving up for a deposit, doing sweat equity hours towards a Habitat house, etc).



"I know why the word HOPE is in their name: Community of Hope. They gave me and my kids hope again."

– M, the Dad of two little ones

# HOLISTIC SUPPORT TO HELP FAMILIES CONNECT AND GROW

### HOMELESSNESS DOES NOT KNOW GENDER, BUT SOMETIMES RESOURCES DO

By necessity, many resources designed to assist the homeless are divided (women only shelters, men only shelters, shelters for youth, etc). However, this will often create barriers to access for parents with children around the age of 12. At that point, most shelters will require that the family split between males and females for the safety of the children. Community of Hope provides an extremely important opportunity: for families to stay together. This helps to reduce trauma to the entire family system- especially the kids.

"Connection is one of the most important things that we can provide for a family facing homelessness; not only to resources but also to the rest of the community for acceptance and support. Every person, every child, should know they are valued and worthy."

We have designed our housing programs to provide as many points of support and access to the community as possible. This informs everything from our case management to the layouts for both our current Permanent Supportive Housing Village and our building project in Titusville- clusters of units around common play and interaction areas.



#### PERCENTAGE OF HOUSING CLIENTS IN TRANSITIONAL HOUSING PROGRAM

35%

Over a third of our clients spend at least one year in the Transitional Housing Program before moving on to longer-term housing solutions.

#### PERCENTAGE OF HOUSING CLIENTS IN PERMANENT SUPPORTIVE HOUSING PROGRAM

65%

Two thirds of our clients participate in our Permanent Supportive Housing- including families on a fixed income and those with special healthcare needs.

We envision a world where every single family no matter its structure or size has a safe place to call home and we're starting here in Brevard County. It is through the support of the entire community- partner organizations, local landlords, houses of worship, and the community at large- that we are able to fulfil this mission.



We need you, and so do they.

MAKE A DONATION TODAY:  
[HOPEOFBREVARD.COM](http://HOPEOFBREVARD.COM)

**“We had no one, nowhere to go, nothing. We lost it all. You gave us the one thing we lost – Hope. It was a daily struggle, but worth every minute of it. The kids are back in school, my husband and I both have stable jobs and we are moving in the right direction every day. Community of Hope guided us in every direction we needed.”**

**- T & S, the Mom & Dad of three kids**



**“My priority was keeping my family together. Covid hit, we were barely hanging on as it was, and then we lost everything. We were living in our car when we were brought into the SOS program. It changed our direction. It changed our life. Thank you! “**

**-Single Mom of four kids**





**“Through the struggle, I saw times that were very dark. Even though I couldn’t see a future for myself and my family, I knew my kids deserved more and that is where Community of Hope came to the rescue.”**

**- N, a single Mother of four kids**



**“We never thought we would be in a position where we would be able to breathe and be able to put some money aside for an emergency fund. Community of Hope gave us a second chance to keep our family together and to put a smile on our faces. It is so nice to see our kids laugh again and to have a room of their own.”**

**- Parents of two children, and who participated in the SOS Program**





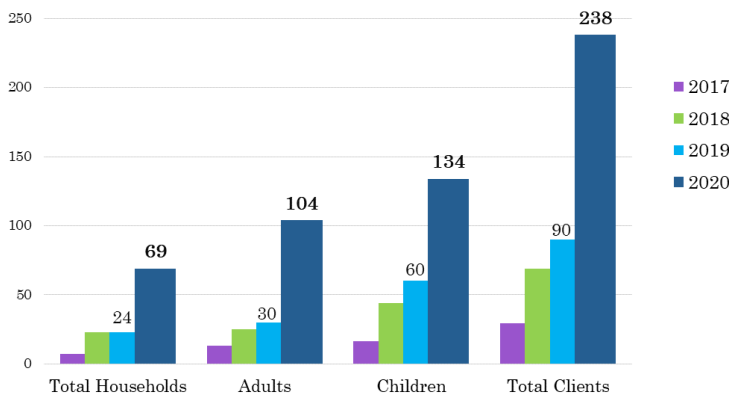
# Safe Overnight Stay (SOS) Program

The Safe Overnight Stay (SOS) collaborative project was conceived as a proof-of-concept project by Community of Hope and the Brevard Homeless Coalition, with 2-1-1 Brevard and Family Promise of Brevard partnering to surround homeless families with the supports they needed avoid the cyclical trap of homelessness. The SOS Program was intended to be a short-term intensive housing solution so that families could stay together in situations where they would otherwise be separated or forced to live unsheltered.

**9 years old**  
Average age of a child entering into the SOS housing with their family



Safe Overnight Stay (SOS) Program Impact 2017-2020



**92%**  
Percentage of individuals who entered the SOS Program without insurance and left with coverage



“My family and I have struggled through Covid: losing our jobs and our home. The SOS program and Nicole gave us relief and comfort we hadn’t felt in months. We are now in a house and getting back on our feet.”

- N & C, Mom & Dad of five kids

“Best community support ever!”

-P, Single Mom of a 2 year old



“Community of Hope connected me to resources that I never even knew were out there. That was a huge step in getting a roof over our heads. “

-J, Single mom of three kids

## HOPE HOUSING SERVICES

### So Much More Than Shelter

While our primary mission will always be centered around providing every every child in Brevard County safe and secure housing, we recognize that there are many ancillary issues that the families are facing. An important part of our mission involves being able to provide accurate and supportive case management services.

These are just a few of the areas we focus on.

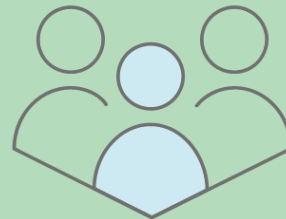
#### EARLY LEARNING REFERRALS

Children who experience homelessness are exponentially more likely to be behind their housed classmates, starting as soon as they begin school. By assisting the families in receiving early learning referrals, we can help make sure toddlers are able to receive preschool services, which also assist parents in maintaining employment.



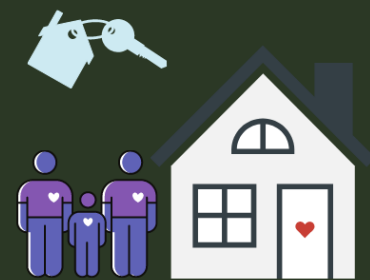
#### CASE MANAGEMENT

Often guardians are run so ragged from the expensive trap of homelessness, trying to provide for their families, that they don't have the time or resources to pause and look forward toward a stable future. Our case management team is absolutely vital to our efforts as they help the families identify what their goals are and provide them the tools to create a plan for the future.



#### MOVE IN ASSISTANCE

Even if a family is able to find housing that fits their needs, many times the deposit and first rent payments are more than they are able to afford. We work with local landlords as well as with other community agencies to provide move in support to transition from our programs to long-term housing solutions that will last.



#### COMMUNITY

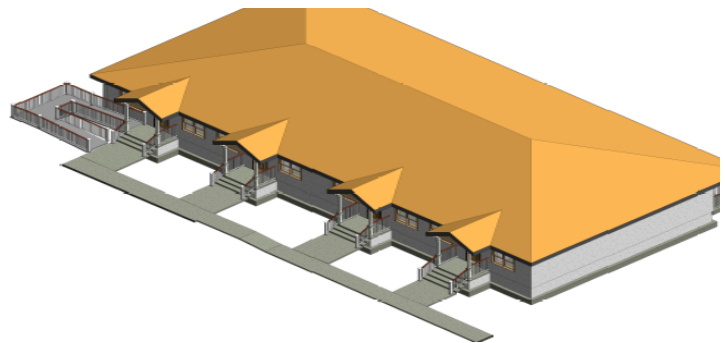
We are always seeking opportunities to provide community connections for the families we are privileged to work with. It's these social support systems that help families to thrive through challenging times, and in many cases, the families we work with are leaving abusive or unhealthy environments (physically, mentally, or emotionally) to start anew with only each other to lean into. Through our Hope Connections mentor program, community events such as holiday celebrations, and our online presence, we hope to always reinforce a fundamental truth: they are not alone.

# Continuing Forward, Continuing to Grow



“When we were living in a hotel, we didn’t think anyone cared, that anyone would help. Then Community of Hope helped us.”

– B, Single father of two children



## Hope Hammock Construction

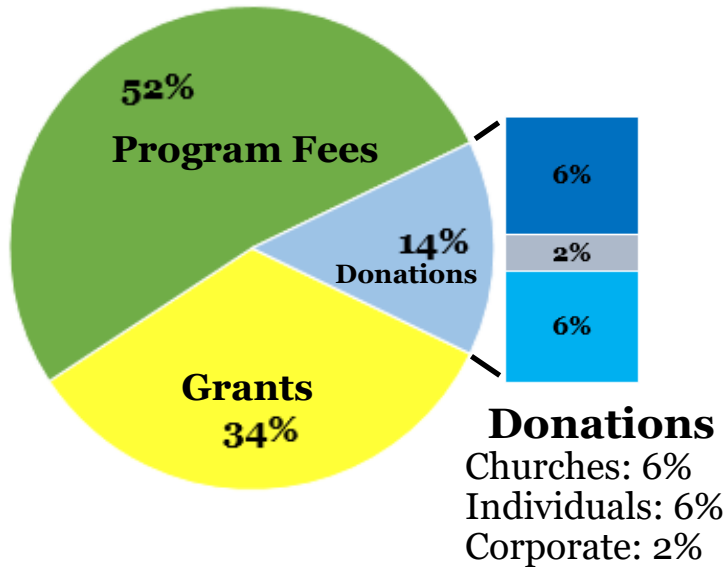
### Titusville Build Project Design Sketch

- ◆ We’re in the “home” stretch of our Titusville build. One of our biggest pushes this year will be breaking ground on, and hopefully completing, construction on Phase 1 of our Titusville build project, a housing community called Hope Hammock. Phase 1 will include four single-family units and should be completed in the next twelve months. Phase 2 will include an additional six housing units within twenty-four months in the most expansive build project Community of Hope has ever completed and will allow us to expand our longer-term housing capacity by nearly 30%.
- ◆ Community of Hope is also focusing on community connections: working with local landlords, rental companies, and hospitality organizations to create meaningful relationships that allow us to offer both long and short term assistance in the form of move-in support for families that don’t necessarily need the services provided by Transitional or Permanent Supportive Housing.



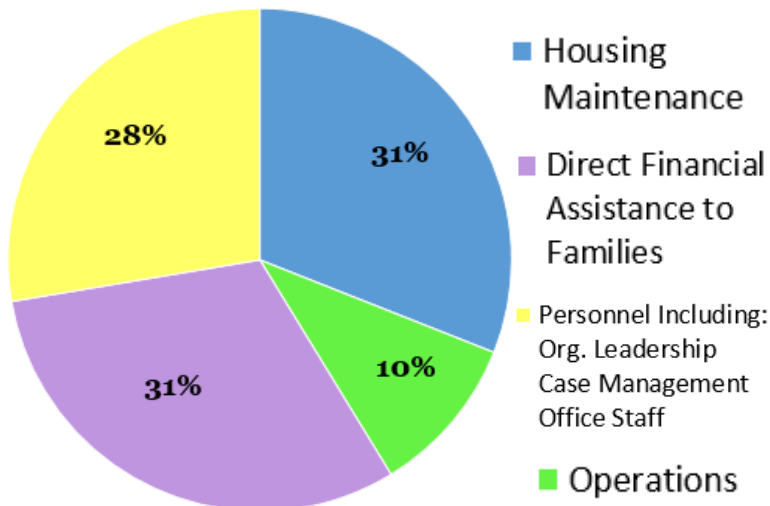


**Income 2020**



**We continue to be trustworthy stewards of the gifts given to us, using them to serve as many in the community as possible.**

**Expenses 2020**



**HELP US GROW**  
**Your Contribution Directly Supports Homeless Families and Children**



**Here's How:**



**PARTNER WITH US**

Whether you are a landlord willing to work with our families or a business wanting to give back to the community we would love to partner with you!



**HELP US SPREAD THE WORD**

Like and follow our Facebook page (see below) then help us to share information in the the community.



**FINANCIAL DONATION**

Every dollar goes into providing Brevard families and children safe shelter when they need it most.

**For more info, visit us at**  
**HopeOfBrevard.com**  
**or on Facebook at**  
**Facebook.com/COHBrevard**

# Organizational Leadership

## Board of Directors

### *Executive Director*

P. Drew Warren

### *2021 Board of Directors*

Stephanie Hopper  
*President*

Bartow Willingham  
*1st Vice-President*

Tracy Masters  
*Secretary*

Becky McCowen  
*Treasurer*

### *Directors*

Bryan Becker  
Susan Blair  
Kevin Brown  
Alyssa Buchanan  
Judy Dolan-Wood  
Megan Howard  
Linda Parrish  
Ellen Rogers  
Mable Williams  
Brian Ledford



In loving memory  
of Ray Hirst  
1935-2020



## Trustee Churches

Ascension Catholic  
Ascension Lutheran  
CenterPointe Church  
Christian Fellowship  
Covenant Presbyterian  
Eastminster Presbyterian  
First United Methodist of Melbourne  
Highland Avenue Fellowship  
Holy Trinity Episcopal  
Mosaic Palm Bay  
Trinity Wellsprings Church

## Connect With Us!

Mailing Address: PO Box 1253  
Melbourne, Florida 32902

Telephone: 321-474-0966

Fax: 321-574-0799

Website: [HopeOfBrevard.com](http://HopeOfBrevard.com)

Facebook: [www.facebook.com/COHBrevard](http://www.facebook.com/COHBrevard)

